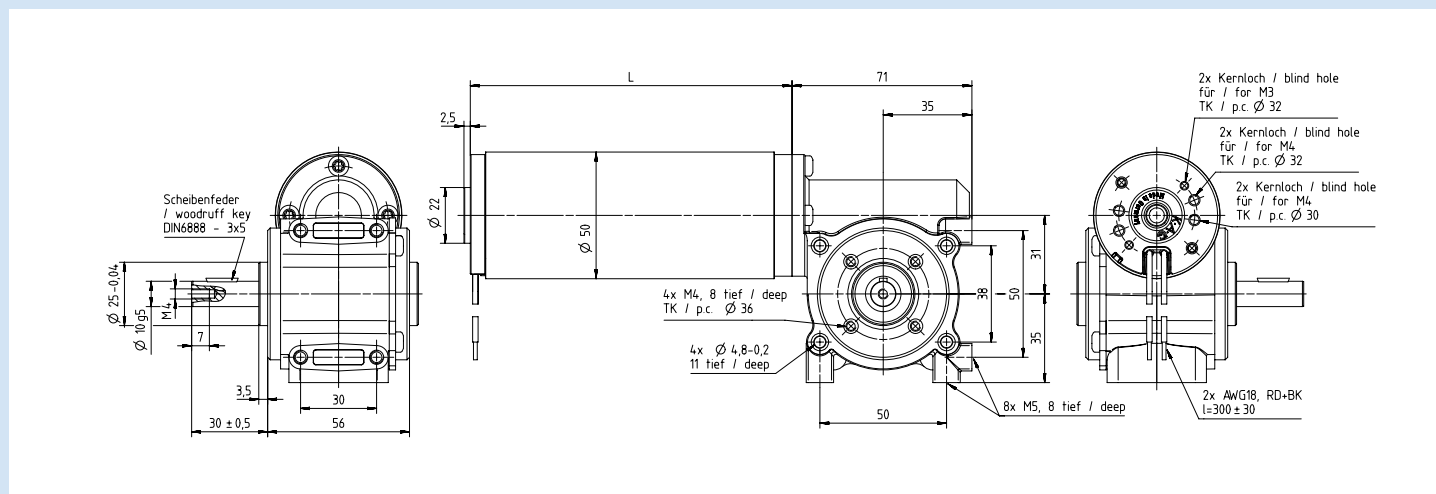


Motor M50 with worm gear SN31

- zinc die-cast gearhousing, hardened steel worm wheel, permanent grease lubrication, output with ball bearing, optional second shaft or output shaft left
- Other reductions, output shaft, connection cable or voltage on request



Gear reduction table M50xXX/I+ SN31

Application on request

Gear reduction	Efficiency of the gear	Speed at motor-speed 3000rpm	Nominal torque at 24V in S1-operation	
			M50x28/I L = 92 mm	M50x65/I L = 127 mm
[i = x:1]	[%]	[1/min]	[Ncm]	[Ncm]
7	69	428,5	53	87
10	66	300	73	119
15	62	200	102	167
25	52	120	143	234
38	46	78,9	192	315
50	40	60	220	360

Gear reduction	Efficiency of the gear	Speed at motor-speed 3000rpm	Nominal torque at 24V in S3-operation	
			M50x28/I L = 92 mm	M50x65/I L = 127 mm
[i = x:1]	[%]	[1/min]	[Ncm]	[Ncm]
7	78	428,5	88	143
10 [#]	79	300	120	196
15 [#]	77	200	169	276
25	58	120	236	386
38	50	78,9	317	519
50	44	60	363	594

General gear data

#) plastic design

Material worm wheel		Plastic	Brass
Maximum torque	[Ncm]	800	1200
Permissible shaft load	[N] (axial / radial)	200 / 500	200 / 500

Stand: 20. Mai 2025 – changes reserved