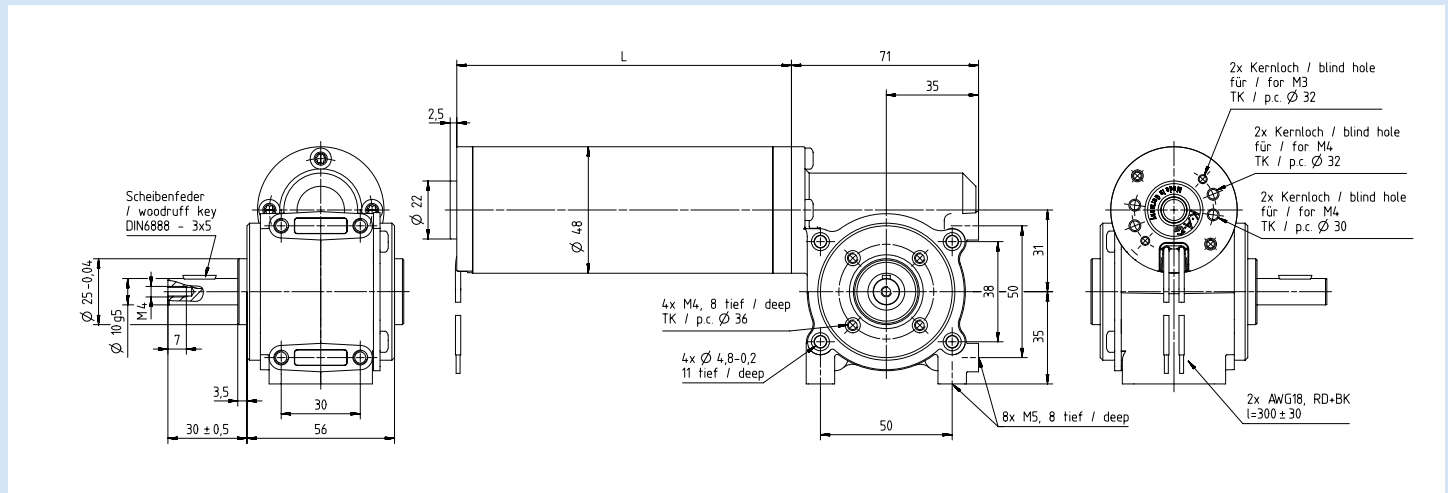


Motor M48 with worm gear SN31

- zinc die-cast gearhousing, hardened steel worm wheel, permanent grease lubrication, output with ball bearing, optional second shaft or output shaft left
- Other reductions, output shaft, connection cable or voltage on request



Gear reduction table M48xXX/I+ SN31

Application on request

Gear reduction	Efficiency of the gear	Speed at motor-speed 3000rpm	Nominal torque at 24V in S1-operation			
			M48x25/I L = 92 mm	M48x28/I L = 92 mm	M48x50/I L = 117 mm	M48x60/I L = 127 mm
[i = x:1]	[%]	[1/min]	[Ncm]	[Ncm]	[Ncm]	[Ncm]
7	69	428,5	24	48	48	72
10	66	300	33	66	66	99
15	62	200	47	93	93	140
25	52	120	65	130	130	195
38	46	78,9	87	175	175	262
50	40	60	100	200	200	300

Gear reduction	Efficiency of the gear	Speed at motor-speed 3000rpm	Nominal torque at 24V in S3-operation			
			M48x25/I L = 92 mm	M48x28/I L = 92 mm	M48x50/I L = 117 mm	M48x60/I L = 127 mm
[i = x:1]	[%]	[1/min]	[Ncm]	[Ncm]	[Ncm]	[Ncm]
7	78	428,5	41	82	82	123
10 [#]	79	300	59	119	119	178
15 [#]	77	200	87	173	173	260
25	58	120	109	218	218	326
38	50	78,9	143	285	285	428
50	44	60	165	330	330	496

General gear data

#) plastic design

Material worm wheel		Plastic	Brass
Maximum torque	[Ncm]	800	1200
Permissible shaft load	[N] (axial / radial)	200 / 500	200 / 500

Stand: 20. Mai 2025 – changes reserved